

Hole					Par		Hole					Par
1					3		10					3
2					4		11					3
3					3		12					3
4					3		13					3
5					3		14					3
6					4		15					4
7					3		16					3
8					3		17					4
9					3		18					3

\*Yellow denotes new holes 4/2009; Orange denotes original holes 4/2000

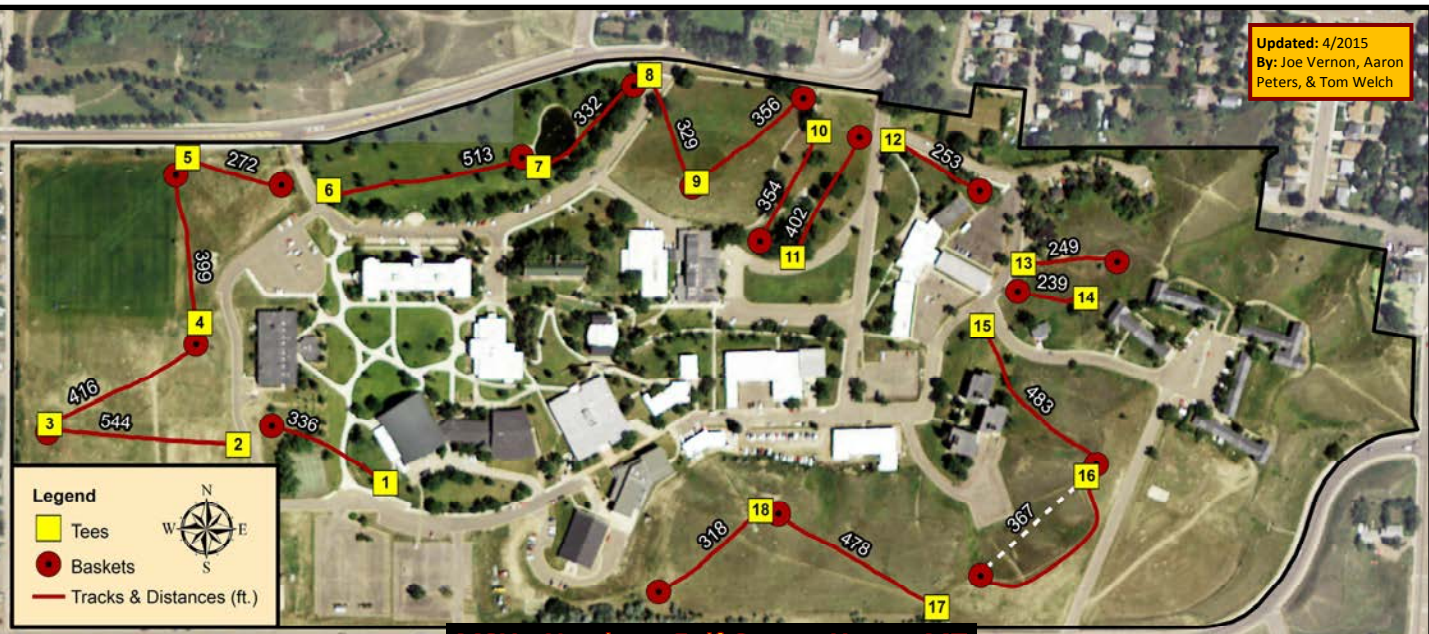
Hole					Par		Hole					Par
1					3		10					3
2					4		11					3
3					3		12					3
4					3		13					3
5					3		14					3
6					4		15					4
7					3		16					3
8					3		17					4
9					3		18					3

\*Yellow denotes new holes 4/2009; Orange denotes original holes 4/2000

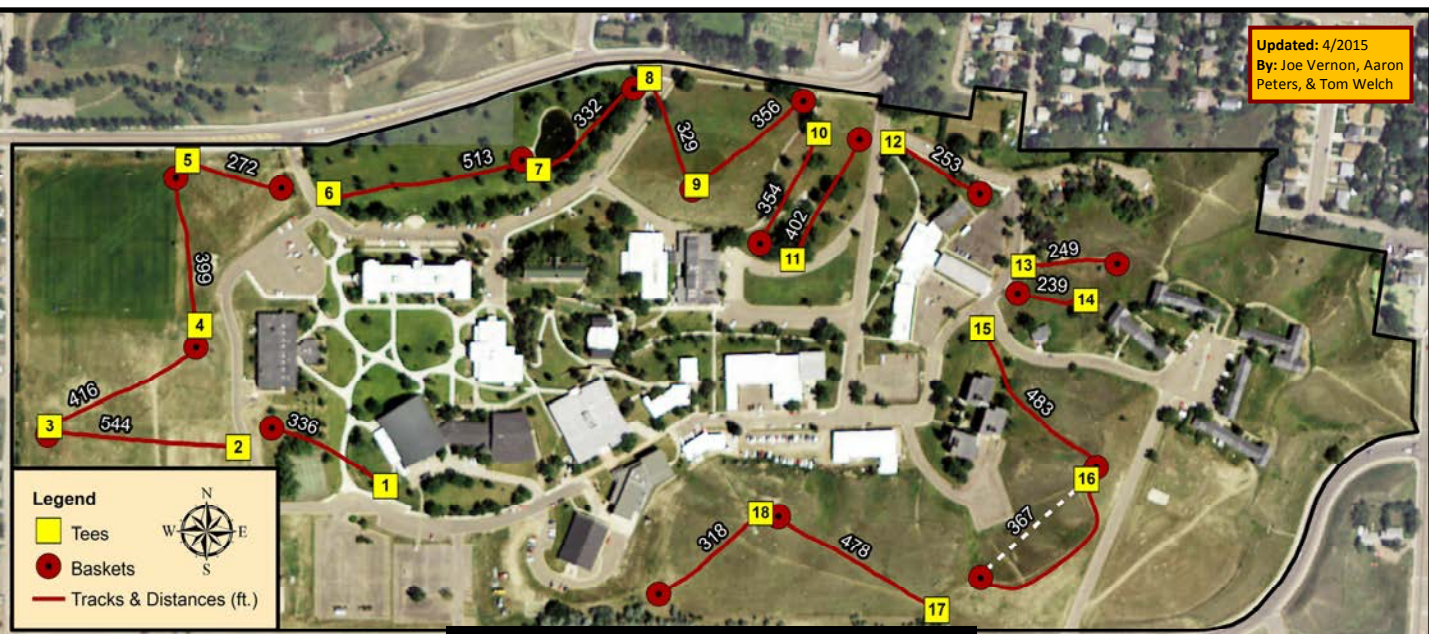
Hole					Par		Hole					Par
1					3		10					3
2					4		11					3
3					3		12					3
4					3		13					3
5					3		14					3
6					4		15					4
7					3		16					3
8					3		17					4
9					3		18					3

\*Yellow denotes new holes 4/2009; Orange denotes original holes 4/2000

Updated: 4/2015  
By: Joe Vernon, Aaron Peters, & Tom Welch



Updated: 4/2015  
By: Joe Vernon, Aaron Peters, & Tom Welch



Updated: 4/2015  
By: Joe Vernon, Aaron Peters, & Tom Welch

