



# MONTANA STATE UNIVERSITY NORTHERN

## Northern Network News

The Official Newsletter of MSU-Northern - December 5, 2025

### Northern Kicks Off the Season with Annual Christmas Tree Lighting



MSU-Northern welcomed the holiday season on Monday, December 1, with its annual Christmas Tree Lighting in the main entryway of Cowan Hall. Assistant Professor of Agriculture Katrina Freide had the honor of flipping the switch to illuminate the tree. Guests enjoyed refreshments and cookies as the campus community gathered to celebrate. A special thank-you goes to the Ambassadors and Recruiting Department for setting up and beautifully decorating this year's tree.

## ASMSUN's Annual Bingo Night Awards \$6K in Prizes



The SUB Ballroom was packed on Wednesday, December 3, as ASMSUN Activities and Events hosted its annual Student Bingo Night—and it did not disappoint. More than 210 students showed up for a shot at an incredible \$6,000 in prizes spread across 18 fast-paced games. From the first number called to the final shout of “BINGO!”, the energy stayed high and the competition fierce. It was one of the most exciting student events of the year!

---



## Northern Continues Commitment to Native Students as LRI Transitions



For the past ten years, the Little River Institute has been an important part of MSU-Northern—providing a welcoming space, cultural programming, mentoring, and academic support for Native American students. That work has been supported by the federal NASNTI program, which the U.S. Department of Education has now discontinued nationwide.

Although the program's discontinuation on January 31, 2026 will bring significant change, MSU-Northern remains committed to the mission and values that have guided the Little River Institute since its creation.

The LRI space will remain open for students, and the traditions and resources built over the last decade will be carried forward through the various campus offices who are best suited to support them. Northern is also in the process of launching an "Aunties and Allies" network—a group of faculty, staff, and students who will serve as familiar faces and advocates for Native American students.

Professional development for faculty and staff will continue to help the campus grow in its understanding of Native student experiences and strengths. The University is also pursuing new funding sources to help sustain key support services.

"We are not giving up—we are adapting," said Chancellor Kegel. "We are grateful for the leadership of those who built the Little River Institute and for the students who have made it a vibrant and meaningful place."

[Read More...](#)

## Student Spotlight – Johnathan Wamsley



For Helena native Johnathan Wamsley, becoming an industrial arts teacher has been a lifelong goal. Now a Secondary Education and Industrial Technology major at MSU–Northern—the only program of its kind in Montana—Wamsley is preparing to bring his passion for hands-on learning back to his hometown.

Inspired by his great-grandfather, a former shop teacher, Wamsley discovered his calling early by helping teach freshman shop classes in high school. While he loves carpentry, he’s recently focused on machining and CNC technology, which he sees as essential to the future of the industry.

On campus, Wamsley stays busy as a leader in Chi Alpha and the Dungeons & Dragons Club, a Resident Assistant in Morgan Hall, and a senator-at-large in ASMSUN. He also tutors drafting and math through Student Support Services. With plans to teach industrial tech at his former high school, Wamsley says Northern has been the perfect fit. “The community here is really tight. I’d much rather be one in 35 than one in 600,” he said.

His goal is simple: give back to the place where his passion first started.

[Read More...](#)

### Campus + AI :

What You Need To Know...

By: Scott Guyant

## Learning in the Loop: Coexisting with AI Through Better Assessment Design

*Part 2: by Scott Guyant, assisted by ChatGPT 5.1 Thinking model*

If detectors are, at best, a noisy smoke alarm, a better move is to redesign how we assess learning. Instead of asking, “How do I catch AI?” Jisc and many

universities suggest flipping the question to: “How can I see my students’ thinking?” (Jisc, 2024).

### **1. Design for the process, not just the product**

One of the strongest moves is to grade the process as well as the final work. That can include:

- **Drafts and revision notes – early drafts plus a short reflection: What changed, and why?**
- **Research trails – a brief list of databases, search terms, and key sources.**
- **Prompt logs or screenshots – if AI is allowed, key prompts and how the tool was used.**
- **Verification notes – a short section at the end: “What did I fact-check? Where? What changed?”**

Jisc’s *Trends in Assessment in Higher Education* highlights these process-rich approaches as ways to keep assessment authentic even when AI is available (Jisc, 2024). They make it easier to see a student’s voice develop over time and much harder to swap in a fully AI-generated product at the last minute.

### **2. Use local, contextual, and iterative prompts**

Assignments tied to local context or class-specific experiences are harder to outsource. For example:

- Incorporate a campus event, local dataset, or community issue the class has discussed.
- Ask students to connect readings to in-class activities, labs, or group work that AI tools haven’t “seen.”
- Build in iterative pieces—proposal → annotated bibliography → draft → final—with feedback and revision.

These prompts don’t ban AI; they require judgment, synthesis, and transfer of knowledge—skills that go beyond what generic chatbots can convincingly fake (Jisc, 2024).

### **3. Use a human-first workflow for suspected misuse**

When you do suspect misuse, a human-first workflow protects both integrity and students:

#### **1. Gather evidence**

- Early writing samples
- Drafts, outlines, or brainstorming notes
- Any AI prompt logs or reflection notes the student submitted

#### **1. Talk with the student**

2. Texas Tech’s guidance on academic misconduct with AI recommends starting with a conversation, not a charge: review the work together, ask how they approached the task, which tools they used, and how they verified information (Tapp et al., 2024).

#### **3. Use tech as context, not verdict**

- Treat any detector score like a smoke alarm: a reason to look closer, never the sole basis for sanction.

- Maricopa’s guidance states that AI detection tools “are not, on their own, effective measures of academic misconduct” and urges reliance on multiple forms of evidence (Maricopa Community Colleges, 2025).
- Turnitin’s own explanation of false-positive rates advises that flags should not automatically trigger penalties (Turnitin, 2023).

#### 1. Document and follow policy

2. Whatever your institution’s process, follow it carefully and document each step. That protects both students and instructors.

#### 4. Normalize an “AI Use Note”

Rather than guessing whether students used AI, make disclosure part of the assignment. For major projects, you might require a short “AI Use Note”:

##### AI Use Note (3–5 sentences)

- Which AI tools (if any) did I use on this assignment?
- What did I use them for (e.g., brainstorming, outlining, language polishing, coding help)?
- What did I independently verify in library or course sources, and what changed after I checked?

This aligns with emerging best practices that frame AI as a tool to be used transparently and critically, not something students must hide (Attewell, 2024; Jisc, 2024). It also gives you a starting point for conversation if something in the work feels off.

#### 5. Clarify your course AI policy up front

Finally, one of the simplest integrity tools is a clear syllabus statement. Maricopa, Texas Tech, and others recommend spelling out (Maricopa Community Colleges, 2025; Tapp et al., 2024):

- Where AI tools are **encouraged** (brainstorming, idea generation, coding help, plain-language explanation).
- Where AI tools are **limited or banned** (take-home exams, specific reflections, certain labs).
- How students should **acknowledge** AI use (e.g., an AI Use Note or a short statement in the bibliography).

When students know what’s allowed and why, they’re more likely to use AI in ways that support learning rather than shortcut it—and you’re better positioned to address issues when they arise.

**Full references and further reading for this column are available at:**

<https://libguides.msun.edu/c.php?g=1502960>

As always please reach out to me with questions, comments, or topic you would like me to address next.

**Scott Guyant**

Research Librarian

# ANNOUNCEMENTS

---

**Last NNN for this Semester**

---

**[Click here for the Finals Exam Schedule...](#)**

---

# UPCOMING EVENTS

---



# Upcoming Events

---

## **Museum Re-Design Open House – Dec. 5**

The Museum Studies class (NASX 215) has spent the semester re-designing the layout of the Louis and Antoinette Hagener Museum and creating exhibit cases with new objects and labels. They are hosting an open house on Friday, December 5, from 3–5 p.m. in the Library, and everyone is invited to stop by. Students will be on hand to share their case re-designs, and refreshments will be provided.

---

## **Cowboy Christmas – Dec. 5**

MSU-Northern Rodeo Booster Club will be hosting the Annual Cowboy Christmas Fundraiser in the Armory Gym. The event celebrates the accomplishments of the Northern rodeo team and their contributions to the community.

---

## **Late Night Breakfast – Dec. 7**

On Sunday night, December 7, students can participate in Late-Night Breakfast in the SUB Food Court from 8:30–9:30 p.m. This event offers students a fun, relaxing, and filling break as they gear up for finals week. In previous years, many faculty and staff have volunteered to cook, serve, and mingle with students—and each other—throughout the evening.

---

## **Hill Country Christmas Revue**

Get ready for a jolly, toe-tappin' Hi-Line holiday celebration! Back for its third year, the Hill Country Christmas Revue features new comedy skits, musical performances, and cheerful stories inspired by local traditions and winter folklore—written and performed by our own community cast.

Schedule:

- Dec 12–13: Musical Guest — Catfish Carl
- Dec 19–20: Musical Guest — Izaak Opatz
- Jan 2–3: Returning Musical Guest — Wailing Aaron Jennings

Enjoy locally written, original holiday skits and live music across three festive weekends.

Ticket Deal: Buy advance tickets to 2 weekends and save \$5; all 3 weekends and save \$10.

[Click here for tickets...](#)

---



# NEXT WEEK

---

## **Saturday, December 6**

- Lights Wrestling @ Conner-Oppenheim Open & @ Battle of the Rockies
- Skylights Basketball vs Dickinson State University - 5:00 PM
- Lights Basketball vs Dickinson State University - 7:00 PM

## **Sunday, December 7**

- Skylights Basketball vs Bismarck State College - 5:00 PM
- Lights Basketball vs Bismarck State College - 7:00 PM

## **Monday, December 08**

- Finals Week

## **Tuesday, December 09**

- Finals Week

## **Wednesday, December 10**

- Finals Week

## **Thursday, December 11**

- Fall Semester Ends
- Finals Week

## **Friday, December 12**

- Skylights Basketball vs Dakota State University - 5:00 PM
- Lights Basketball vs Dakota State University - 7:00 PM

## **Saturday, December 13**

- Skylights Basketball vs Bellevue University - 5:00 PM
- Lights Basketball vs Bellevue University - 7:00 PM

## **Sunday, December 14**

- Lights Wrestling vs Eastern Oregon University - 1:00 PM

## **Tuesday, December 16**

- Fall Grades Due in Registrar's Office

## **Wednesday, December 17**

- Lights Basketball vs Northwest Poly Tech - 6:00 PM

## **Saturday, December 20**

- Skylights Basketball vs Briercrest University - 12:00 PM

## Sunday, December 21

- Lights Wrestling @ Reno Tournament of Champions

## Thursday, December 25

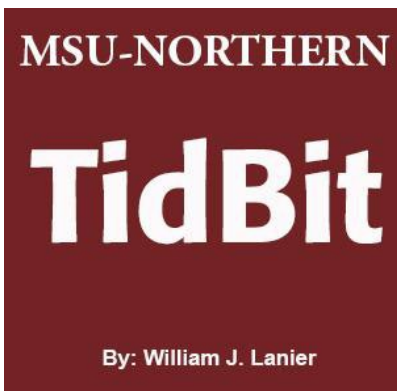
- Holiday ~ Christmas ~ Offices Closed

## Sunday, December 28

- Lights Basketball vs Lakeland University - 8:00 PM

## Monday, December 29

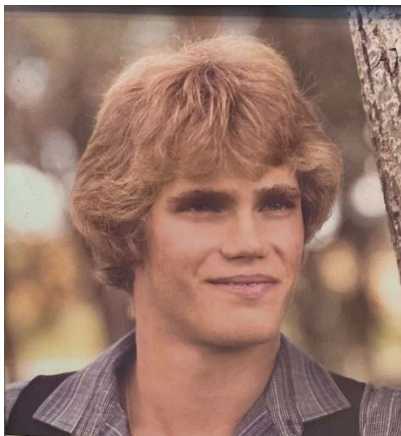
- Skylights Basketball vs Lakeland University - 1:00 PM
- Lights Basketball vs Lakeland University - 3:00 PM



## (#448) Remembering Dan Ulmen Part 2 the earlier years

As many of you know, Dan was a much more complicated person than he appeared. The more I got to know Dan, the more I could see this. I first met Dan in the Fall of 1986. I was a Resident Assistant (RA) on the 8<sup>th</sup> floor of Morgan, and Dan lived on the north wing of Morgan Hall. By the way, it is probably not a coincidence that

1986-87 was the last year that the North wing was open. Our friendship began the way a typical Dan Ulmen conversation went: talking about absolutely everything and walking away with a smile, not remembering one thing that was said, but you felt good. The one thing I learned from our conversation was that family and friends meant the world to Dan! This never wavered!



Being the complicated person that Dan was, I thought I would do some searching on our friend and see what treasures I could uncover. Here is Dan's Senior picture from the 1981 Big Sandy Pioneer (yearbook).

Even more fun than the picture was the caption that accompanied it. Here that is

**DANIEL CLIFFORD ULMEN**

*"Cloudwalker"*

*FFA 4; Honor Society 2,3, 4; Pioneer Club 1, 2, 3, 4; Student council 4; Dirty Dozen 4; Basketball 1, 2, 3, 4; Football 1, 2, 3, 4; Track 1; Student body sec. 4; Second Team All-state BB 3; Second team all-conference BB 3; Most improved BB player BB 3; Most Rebounds 4; Best Defensive Player 4; Best Freethrow Percentage 4;*

*Who's Who 3; Distinguished American High School Students 3; Nat'l Honor Society Awards 2, 3, 4; -*

*I, Dan Ulmen, Being of some body and cob-webbed mind, will the following: to Mark Ratey my ability to jump, to Ben Jenkins my ability to screw up in athletics my senior year, and to Ken Chamberlain my ability to not listen to the coaching staff and other various irritating people.*

Just reading this, I can hear Dan's voice in my head!

This then led me to look up Dan, aka Cloudwalker's, basketball exploits. Here is a box score from the Havre Daily News of a Big Sandy Pioneer game from January of 1980, where Dan scored 25 points. Note that at the time, Big Sandy was a Class B school.

## Northern B

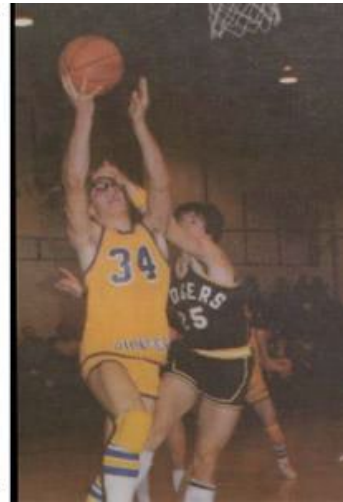
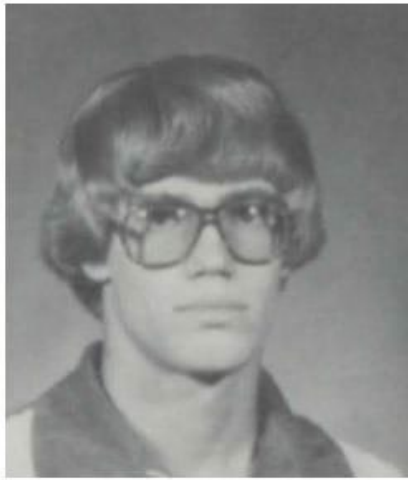
### —FRIDAY RESULTS—

**HARLEM** 14 9 15 12—50  
**BIG SANDY** 25 9 26 29—89  
Harlem — Matt McCann 3 0-1 6; David Boldt 5 0-1 10; Brent Cresswell 1 2-3 4; Eugene Pronto 4 0-1 8; Paul Haluszka 2 1-2 5; Steve McCann 2 1-3 5; Tim Yoeman 3 0-3 6; R. Leo 3 0-0 6. Totals 23 4-14.  
Big Sandy — Mike Richter 12 2-2 26; Dan Ulmen 10 5-10 25; Bart Blitz 2 2-6 6; Calvin Danreuther 3 5-6 11; Jeff Remick 3 4 4 10; Jeff Ament 2 2-4 6; Darren Schuster 1 0 2 2; Terry Goll 1 1-2 3. Totals 34 21-36.  
Team fouls Harlem 26, Big Sandy 17  
Fouled out M. McCann. Technical foul Boldt

Besides basketball, Dan was also an outstanding student. The following was in the June 5, 1980, edition of the Havre Daily News (for Big Sandy High School).

**Students who have been inducted into the Society of Distinguished American High School students are Reg Springer, Patti Yirsa, Jeff Remick, Dan Ulmen, Kevin Barsotti, Jill Archibald, and Jodi Romine**

I could go on and on, but this is a good place to leave a few photos of Dan. These three are from the 1980 and 1982 Big Sandy Pioneer (yearbooks).



This one was Dan's MSU-Northern staff ID from 2000.



Rest in Peace, my friend, you are and will be missed.

Do not forget that on December 13, 2025, there will be a celebration of life for Dan at the Student Union Building on the MSU-Northern campus.

If you have any stories, pictures, or comments regarding Dan, please continue to share them with me by e-mail at [wjlanier1963@yahoo.com](mailto:wjlanier1963@yahoo.com).

For part II on remembering Dan Ulmen, please check back in two weeks. If you have any stories, pictures, or comments regarding Dan, please share and e-mail them to me at

[wjlanier1963@yahoo.com](mailto:wjlanier1963@yahoo.com).

Visit our website

Montana State University-Northern | 406-265-3700 | [www.msun.edu](http://www.msun.edu)

STAY CONNECTED



MSU-Northern | 300 13th Street West | Havre, MT 59501 US