



**MONTANA STATE UNIVERSITY
NORTHERN**

Northern Network News

The Official Newsletter of MSU-Northern - September 25, 2020

Video – MSUN - American Indian Heritage Week Dance



Special thanks to Anonda GoesAhead, freshman pre-nursing major and Jonathan Nepoose, Jr., senior elementary education major for helping make this video in honor of their heritage and American Indian Heritage Week.

Native American Indian Heritage Week



In honor of American Indian Heritage Week, the Little River Institute and the Sweetgrass Society put up the tipi on the 11th street MSUN campus lawn. MSU-Northern has the highest percentage of American Indian students of all the campuses in the Montana University System. Special thanks to the football team for their help in putting up the Sweetgrass Society's TiPi.

MPSEOC College Fair Goes Virtual



Every fall the Montana Post-Secondary Educational Opportunities Council (MPSEOC) sponsors a three-week long college fair tour throughout Montana. This year, in response to COVID-19, it was reduced to one week and was conducted online. Several of our recruiters participated in the event

virtually and were able to answer questions from potential students. MPSEOC is a non-profit organization representing the 25 institutions of higher education across the state of Montana. MPSEOC helps promote higher education throughout the state.

MSU-Northern Students Help with Flu Clinic



Photo by: Havre Daily News/Colin Thompson

MSU-Northern nursing student Desiree Norden gives a flu shot Tuesday at Northern Montana Hospital's drive-in flu clinic. Northern Montana Health Care held an in-house flu vaccination clinic Monday and Tuesday and is holding a drive-through flu vaccination clinic for the general public next week, Thursday through Saturday (Oct. 1-3).

[Read more...](#)

Veterans Upward Bound Prepares Veterans for Remote Learning



Since 1992, MSUN Veterans Upward Bound TRIO (VUB) has provided free face-to-face classes to prepare veterans for any traditional learning environment. In March, that traditional learning environment became an online one. VUB responded by suspending all face-to-face classes and shifting to a live online format. The result is redesigned program content and expanded use of an online learning platform for delivery of instruction.

[Read more...](#)

Metals Building gets a Much Needed Facelift



Two years ago, MSU-Northern started painting the residence halls and that painting scheme has transformed the east end of campus. The Metals Technology building has now been painted with the new look. This small, narrow stucco building was built in 1945 for the industrial arts classes and shops. Still in use today, it serves as a welding and machine shop and is known as the Metals Technology Building.



MSU-Northern Plants 22 New Trees

Bill Ackerman from Evergreen Sprinkler and Landscaping has been on campus for the past few weeks taking out the Ash trees that died as a result of last year's difficult winter and planting 22 new trees. The new trees are a nice mix of Birch, Maple, Aspen, and Canadian Red Choke Cherries.



Mask of the Week

If you are like me, you have noticed all of the amazing masks people have been wearing this year. I have decided that it is time to start to acknowledge some of these outstanding masks. This is your chance to email me (potterj@msun.edu) a picture of your favorite mask along with the name of the person wearing that mask (with their permission).

Since it is American Indian Heritage Week I want to start out this column by featuring the mask worn by Jonathan Nepoose, Jr., senior elementary education major. Jonathan, thanks for helping keep Northern safe! Keep wearing those masks! Keep classes on campus!

Important Announcements

Tilleman Field Update

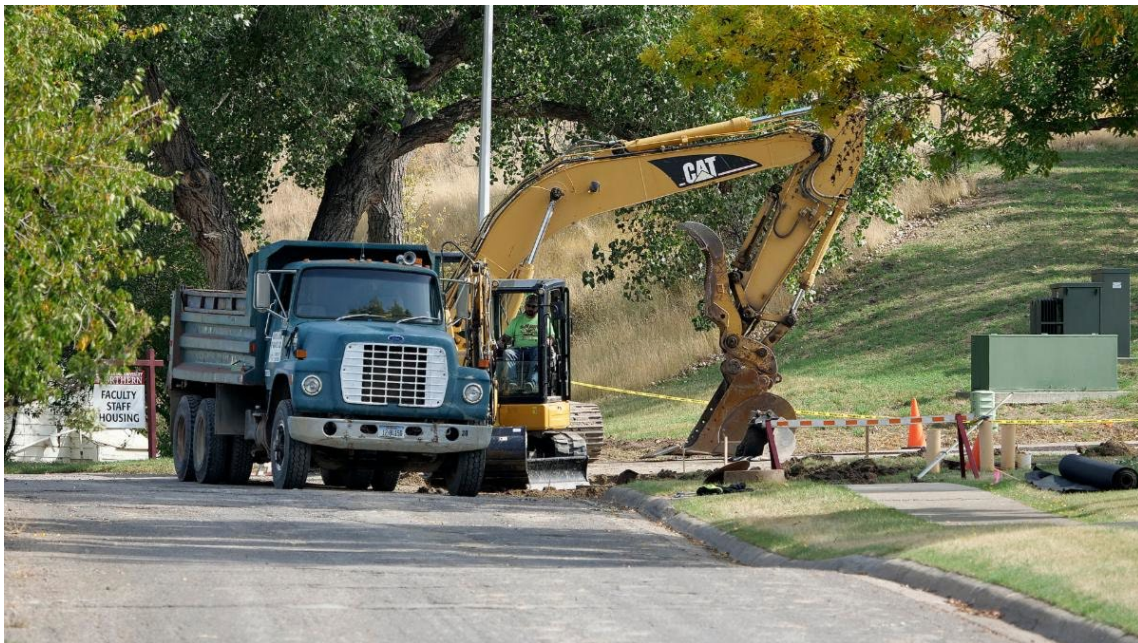
Last week the NNN announced that the Board of Regents officially approved naming MSU-Northern's new football field the "Tilleman Field." We regret to report that since that announcement Mike Tilleman passed away. Mike was a very dear friend of Northern and he will be missed.

COVID-19 Campus Information Statement

MSU-Northern will not be providing any information or details related to any COVID cases. The Family Educational Rights and Privacy Act (FERPA) and the Health Insurance Portability and Accountability Act (HIPAA) prohibits us from releasing any personal, physical, or health related information on any of our students, faculty, or staff.

MSU-Northern would like to assure everyone that we are making every effort to keep our campus and community safe. For the past six months, MSU-Northern has been working closely with our local and state health officials and health care providers to ensure that our plans for people who test positive or need to be quarantined meets or exceeds all the CDC health guidelines.

Road Work on Tiber Drive



Please be advised that a campus streets improvement project has begun on Tiber Drive and will continue to 1st Avenue. The contractor will be barricading and redirecting traffic and access to Morgan Hall, Mackenzie Hall, and the Metals Technology building to Bonine Drive headed east up past Student

Family Housing complex then south to 13th Street West for the duration of work on Tiber Drive. Please plan accordingly.

Campus Hours This Semester:

As a general rule, all classroom buildings will be open from 8:00 a.m. – 5:00 p.m. Monday thru Friday and closed on weekends. Buildings will be open as needed for evening or weekend classes or specific events. Building access is being limited this year to allow our custodial staff time to clean the buildings for the next day of classes.

Vande-Bogart Library

- Monday – Thursday 8:00 a.m.-8:00 p.m.
- Friday - 8:00 a.m. – 5:00 p.m.
- Saturday – Closed
- Sunday – 1-8:00 p.m.

Athletic Center/Gym

- Monday – Friday - 8:00 a.m. – 9:00 p.m.
- Saturday and Sunday - Closed

Food Services

Due to COVID19, hours of operation will allow for an hour between meals for cleaning purposes.

Monday-Friday: 7 a.m. to 7 p.m.

- Breakfast: 7 a.m.-10 a.m.
- Lunch: 11 a.m.-3 p.m.
- Dinner: 4 p.m.-7 p.m.

Saturday-Sunday: 10 a.m. to 5 p.m. with a limited menu

- Brunch: 10 a.m.-1 p.m.
- Dinner: 2 p.m.-5 p.m.

Please note: Meal service is not provided during Thanksgiving, Winter Break, Spring Break, and when all of the residence halls are closed. Limited hours are available during Observed Holidays when there are no classes and offices are closed.

SUB and SUB Fitness (Wellness) Center

- Monday – Thursday 7 a.m. – 8 p.m.
- Friday 7 a.m. – 5 p.m.
- Saturday and Sunday Closed

Bowling Alley – Closed

Lights lounge – Closed

Mackenzie Hall – Closed to the public

Morgan Hall – Closed to the public

Students... Register to Vote

Federal law mandates that colleges and universities provide their enrolled students who are eligible to vote with voter registration forms in election years. This email contains a link to the [Montana voter registration application form](#) and links to helpful voter registration information. The upcoming elections for both federal and state offices occur Tuesday, Nov. 3, 2020.

If you are not yet registered to vote, the [Montana voter registration application form is available online.](#)

[This website will allow you to confirm whether you are registered to vote in Montana.](#)

[Find additional information here](#) if you are unsure about your eligibility to register to vote in Montana or if you just want to learn more about the process.

Complete the Census

Please find below some important information about the 2020 Census from <https://census.mt.gov/>:

- **If you have not yet completed the census, go to <https://census.mt.gov/> and follow the instructions to complete your census questionnaire. It's easy to do and only takes a few minutes!**
- **If you are a student going to college in Montana and living off campus, you should be counted as a Montana resident, because unlike your on campus classmates, you haven't been counted through campus housing.**
- The Census is a count of everyone residing in the United States: in all 50 states, Washington, D.C., and the U.S territories.
- It only takes 10 minutes to answer 9 simple questions that will shape your community for the next 10 years.
- Your response to the 2020 Census is safe, secure, confidential, and protected by federal law.

THE CENSUS: A SNAPSHOT FOR MONTANA

- *Montana receives more than \$2 billion every year in federal funding that is allocated to our state based on census data.*
- *Census data affect your voice in Congress by determining how many seats each state will have in the U.S. House of Representatives. Projections show Montana could gain a U.S. House Representative in Congress with an accurate count.*

For more information, please visit <https://census.mt.gov/>, www.facebook.com/MontanaCensus2020/, or call 406-841-2740.

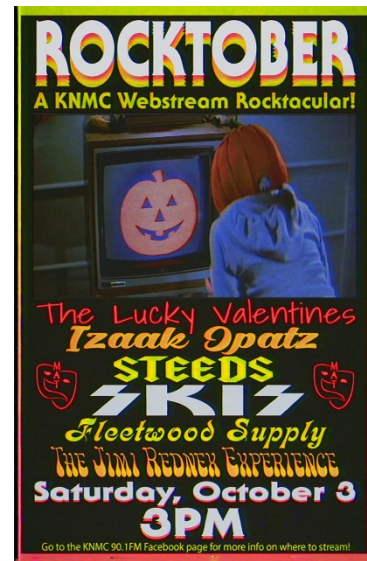
Upcoming Events

MSU-Northern Rodeo – Oct. 2 & 3

Come support the MSU-Northern Rodeo Team on October 2-3 as they compete in the Bigger Better Barn at the Great Northern Fairgrounds. Performance start at 7:00 p.m. both nights. Tickets are \$15 at the door, \$12 presale, Seniors 65+ and Students with ID's \$5, Children 10 and under are free. Please bring your mask. Masks will be provided if you do not have one. Come to the gate by the Super 8 if you need to pay, to alleviate any congestion in the Bigger Better Barn.

KNMC/MAT present: Rocktober web stream concert Oct. 3rd

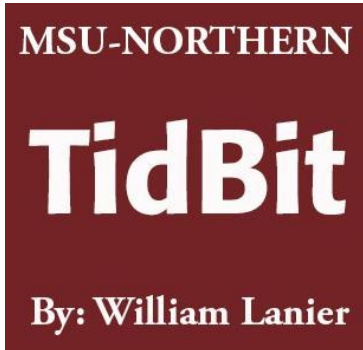
For the past 5 years, KNMC has been working to create opportunities for musicians of all skill levels to connect and perform around the hi-line. Two of KNMC's annual live music events act more like intramurals for musicians in that they put teams of players together for one-off performances. Unable to host such annual intramural music events like Tribute or Rock Lotto due to COVID-19, KNMC started a songwriting challenge back in May. Participants were given an opportunity to write a song in isolation and submit it by the end of the month. With social gathering restrictions still in place, KNMC has opted to continue the songwriting challenge until further notice.



Not everyone wants to be a songwriter, so this has left quite a few musicians without opportunities to perform and connect. To address this, KNMC teamed up with the Montana Actors' Theatre (MAT) to start web streaming concerts, the first of which will take place on Saturday, October 3rd. This event will feature some of the Tribute bands scheduled to perform at KNMC's Spring Tribute event alongside some fantastic traveling musicians with ties to Havre and the hi-line.

If you're a musician who would like to participate in future KNMC music events, check out the North Central Montana Musicians group.

For more information on where to stream the performances, visit facebook.com/KNMCHavre



I would like to thank everyone who responded to my question from last week's TidBit; "In the lower 48 states, only one other college/university has a location further north than MSU-Northern. Do you know what school this is?"

After receiving several replies that included: Northern faculty member Dr. Carol Reifschneider who stated Dakota College in Bottineau, Northern Alumni Fred Paulsen who stated Western Washington University and Kevin T. who stated

University of Maine at Fort Kent, I thought I had better do some research.

Using Google I searched the GPS coordinates for each of these schools and here are the latitudes of each:

Dakota College in Bottineau (North Dakota)	48.8326°
Western Washington University	48.7343°
MSU-Northern	48.5409°
University of Providence	47.4907°
University of Maine at Fort Kent	47.2504°

Thus it appears that according to this quick search, MSU-Northern is actually third and not second as I had previously thought.

Looking at these numbers I decided to convert these numbers to something that I could relate to, like miles. Using the Latitude/Longitude Distance Calculator on the National Hurricane Center and Central Pacific Hurricane Center website (<https://nhc.noaa.gov/gccalc.shtml>) these numbers were converted to miles (rounded to the nearest mile).

Dakota College in Bottineau (North Dakota) is 6 miles further north than Western Washington University which is 12 miles further north than MSU-Northern which is 63 miles further north than University of Providence in Great Falls which is 14 mile further north than University of Maine at Fort Kent

Thus, Dr. Carol Reifschneider, had the correct answer with Dakota College in Bottineau. But to Fred Paulsen's credit, Western Washington University bills itself "The northernmost university in the contiguous United States." This is a true statement in that Dakota College in Bottineau is not a university.

University of Providence was placed on the list for comparison to Northern and to the University of Maine at Fort Kent.

This geography lesson does lead me to one of my all-time favorite tidbits-- which is that the south-east corner of Montana is closer to Texas than it is to the north-west corner of Montana.

If you are still reading this week's TidBit thank you. In the coming weeks I will have my second list of My Top 10 Northern Facts and one on Fred Paulsen.

If you have an idea or would like to comment on the NNN TidBit, please e-mail at wjlanier1963@yahoo.com.

Visit our website

Montana State University-Northern | 406-265-3700 | www.msun.edu

STAY CONNECTED



MSU-Northern | 300 13th Street West, Havre, MT 59501